



**Sbabial sjun'jibal**

**XCHOLJIBAL TA YILEL YANTIK XAN SJUNIL MANTALIL YUN TA YILEL TE BITIK YICH'SPASEL YUN YUT'SINEL TA TSOBWANEJIBALL TE ANTSETIK SOK PAJALIL YANTIK TA JUNAX TA YORAIL STSAWANEJ SLEEL TUNEL 2020-2021.**

**SBABIAL SK'OPLALIL  
SJUNIL SPISIL SMANTAL**

**SBA'TENEL**

**Biluk, swentail, banti ak'bil, Sk'anchajpanel yun xcholel sok Xjach'ibal Yak'elil.**

**Jun jtsob mantal (Art. 1).** *Biluk.* Ja in to xcholjibal ja'me pasbil yun te skomel, ta mero smeलेलil ma yunuk ay makelil, te me ay ma la spas ta muk' te mantalil yun tsawanej ta tejk'lum yun ta yuts'inel ta tsobwanejil te antsetike yun sk'oplal te pajal antswiniketike (CPcM) sok pajalil ta junax, te ayik jich nix yun a ta yich'el ta muk' yun xajt'al xajt' tsowanejil yun te antsetik, jich me yun stael ta yilel a te pajalil ta yun antswiniketik yun spasel te k'alal yorail tsawanej sleel tunel ta 2020-2021.

Ja in xcholjibal k'op, ja me jach'em tel te ta chapel k'op yun te yawil tsojbil tsob muk'ul chapwanej tsawanej pas jun ta chajpajibal tsael at'el tunel ta muk'ul lum ta xchapel te sjunal SUP-JRC-14/2020, ja nix jich' te mantal k'axel nax chaneb yajtalul te muk'ul mantalil ta tjejk'lum chanlajuneb sbuluchwinik, pasbil yajtalul chanlajuneb sbalunwinik, ta juk lajuneb yulel agosto yun jawil 2020.

**Cheb jtsob mantal (Art. 2).** *Swentail.* Yich'el jich bit'il lek pasbil xch'unjibal te yantik xan smantal at'el tunel yun ta VPcM sok pajalil ta junax, te cholbil le ta Junax spisil Mantal te yochel te antsetik ja ta mayuk yut'sinel ta xkuxlejal sok ta Mantalil ta Junax yun Snailts'ibjibaj Sbelal Stsawanej, jich nix bit'il chiknajemtesbil yun te sk'oplal yun yilel te snak'anjibal te stojol muliletik yun VPcM le ta baiy chapwanej tsawanej te sok



---

**CHAJP MANTALIL TA TSOBLUM**

yak'el, le ta ba yiltileyel, te xajt'al xajt' tsowanejil yilik lek te ta nak'anteswanej le ta spisil tak'uwanej tsowanejil te pajalil ta junax ta spisil.

**Oxeb jtsob mantal (Art. 3).** *Xcholibil k'op.* Le ta in xcholibal ja me jich ya yich' snael a to:

**Sjapelbaj stukul:** Ja te tul te ya sta'yun te tunel stawanej te xch'unjelbal yun snak'anel jich bit'il sjapelbaj, yun jich te snak'anel ya me sta nanixa yun ma pajal sok te yak'ela ta jun xajt'al xajt' tsowanejil, yun me ts'akal ay yun te bitik ya xk'anote ta baiy mantaliletik.

**Stobelbail:** Ja me swenta te jun tsobjibal, ta slekil a te cheb o bayal xajt'al xajt' tsowanejil sjunsbaik, le nix ta ts'ibayel chapbil k'op, yun yak'el tsawanej sjapelbaik ja nix ta pajal yutil smakotel.

**Mantal Awalil ta stsobil-at'eltunel:** Mantal Awalil ta jtejk'lum at'eltunel yun snail ts'ibjobal tsawanej, sok yochelinel a'tel yawajlum yun Tabasko.

**Muk'ul mantalil:** Muk'ul Mantalil Jtsobwanej yu'un Jtsob Jtejklum Jtsobnax ay ta Mejiko.

**Mantalil yun tejkum:** Muk'ul Mantalil Jtsobwanej yu'un Jtsob Jtejklum Jtsobnax ay ta Tabasko.

**Snail ts'ibojibal ta stsobil tsaobjibal:** Snail Ts'ibojibal ta stsobil tsaobjibal sok yochelinel a'tel yawajlum ta Tabasko.

**INEGI:** Snail Spamal slum yun yajtelul sok lum k'inal.

**INPI:** Snail Spamal lum yun bats'il yajwal tejkumetik ta sk'inal Tabasko.

**Mantalil tsawane:** Mantalil tsawanej sok te xajt'al xajt' tsowanejil ta stsobil jtejklum Tabasko.

**Mantalil ta junax:** Mantalil ta junax yun snail ts'ibjobaj sbelal tsawanej.

**Mantalil ta yochel:** Mantalil ta Junax yun yochel te antsetik ja ta mayuk yut'sinel ta xkuxlejal.

**VPcM:** Uts'inel tsobwanejil yun antsetik, ta sk'oplal ants-wini.



---

### CHAJP MANTALIL TA TSOBLUM

Te cholbil k'op sok jatbil k'op te ma ts'ibabil le ta baiy jun to, ja me jich yich alela te bit'il ay te ta cheb jtsob mantal le ta muk'ul mantal yun tsawanej.

**Chaneb jtsob mantal (Art. 4).** *Skanantayel Ich'el ta muk'.* Te ich'el ta muk' te ya yich' kanantayel ja me te tsobwanejil sok te yun tsawanej te yun antsetik sok ta yotsesel, pajal yochilinel at'el, mayuk sbajel sok mayuk yuts'inel, yak'el ta lek te stulanil mantalil son bitik ay ta spamal balumilal te ay sk'oplal a te yich'el ta muk'antswiniketik yunix skanantayela ta junax.

**Joeb jtsob mantal (Art. 5).** *Spasel yak'el ta sk'oplalul.* Ya me stak' yich ak'el te sk'oplalul chapbil mantaletik sok mantalteswanej, jich nixuk ta Mantalil ta Junax yun yochel mayuk yut'sinel ta xkuxlejal, sok sjuybail ta chaneb Bis te'nel, te ta uts'inel tsobwanejil sok yoxebal te'nel yun te Spukel Slamanel k'op yun ta sjunil mantal xyich'el tsaj, yilel, stojel mulil sok skomel smakel te uts'inel yun te antsetik, ta slajibal, te xat' slajunebal Bis yun te snail lum k'inal tsawanej sok nix te snail at'eltunel ta jamal jteklum tsawanej sok te mantalil ta junax yun snail ts'ibjibalj sbelal tsawanej te ta oxeb jtsob mantal yajtalul jun xat' K) jukeb yajtalul joeb, lajuneb yajtalul jun xat' g), lajcheb scha'winik yajtalul jun xat' b) jatbil baluneb, chaneb yoxwinik yajtalul jun xat' g), chaneb waknik, chanlajunwinik yajtalul jun xat' f), baluneb waklajunwinik yajtalul jun xat' i), baluneb wakjolanjunwinik, jbjak' cheb yoxwinik yajtalul cheb sok jbjak' cheb yoxwinik Bis.

**Wakeb jtsob mantal (Art. 6).** *Sk'oplal bit'il yich'cholel.* Te xcholibal ja in xcholjibal ja me ya yich' pasel sok a te bit'il pasbilix te k'opetik, tsobilix sok pasbilix, yun te jun jtsob mantal yun te Muk'ul Mantalil Jtsobwanej yu'un Jtsob Jtejklum Jtsobnax ay ta Mejiko, joeb, yajtalul cheb te ta mantalil ta junax yun snail ts'ibjibajl sbelal tsawanej; oxeb, yajtalul cheb te ta tsawanej mantalil sok te te xajt'al xajt' tsowanejil ta stsobil jtejklum Tabasko, te Muk'ul Mantalil Jtsobwanej yu'un Jtsob Jtejklum Jtsobnax ay ta Mejiko te ich'el ta muk' ta spamal k'inal.



---

CHAJP MANTALIL TA TSOBLUM

**Jukeb jtsob mantal (Art. 7).** *Xjach'ibal slekil k'uxtayel winik ants.* Ja me ya yich' pasela yun te ja in cholbil k'op te xjach'ibal slekil k'uxtayel winik ants te mayuk yich'xat tilayel, janax yun stukel, choltileyelbel sok ta junax pajal.

**XCHEBAL SK'OPLALIL  
YUN SNAIL TS'IBJIBAL SLEEL TUNEL SOK YOCHELINEL A'TEL YAWAJLUM  
TA TABASKO**

**SBABIAL'TENEL  
Xjach'ibal le ta swentainel sleel tunel**

**Waxukeb jtsob mantal (Art. 8).** *Xjach'ibal te pajalil ta junax ants-winik.* Te pajalil ta junax ja me sk'oplal mayuk slajibal jich bit'il xjach'ibal mantalil te le ay ta xchebal jtsob mantal xchebkajal A, xatbil jukek, jo'lajuneb scha'winik xchebal xat', jun yoxwinik jun xat', oxlajuneb yoxwinik sok wakeb yoxwinik le ta Muk'ul Mantalil, ja nix jichuk ya me yich'kuyel xjach'ibal mantal yun sleel tunel jich bit'il ayix le ta mantaletik yajtalul lajcheb xcha'winik yajtalul cheb, xat' b), xatbil baluneb sok jo'lajuneb xcha'winik, yajtalul jun te ta Junax mantalil; jich me ya yich'pasela te pajal sk'opyayejik te antsetik sok winiketik, ja me jich yich'tsaj te sk'oplal pajalil, yiptesel, junax ilel sok majk'nax.

**Baluneb jtsob mantal (Art. 9).** *Xjach'ibal te pajalil sok mayuk bajelil.* Ja nix jich a te xjach'ibal yun pajalil sok mayuk bajel le me najk'anbil te ta Muk'ul Mantalil, le ta sbabial jtsob mantal, ta xchanebal kum, ja te jich yaloj te ma'stak pasel te bajelil yunax ja yun te banti jach'emtel, te ants-winik, te yawilal, te ma ts'akal, te mebaj, te stalel xkuxlejal, te bitik ch'unej, te snopibalyun, te bitik sk'anoj, te bit'il xkujxlejal o yan tik xan a te ya yich'bey a'men pasbeyel ta stojol sok te me ay skombeyel o yixlantesbey te yich'el ta muk' te skolelal te antswiniketike.

Te k'alal sk'alelal sleel tunel, ya me yich' ilel, sjamtileyel sok yak'besbaj te xjach'ibal te pajalil sok mayuk b'ajel.



---

### CHAJP MANTALIL TA TSOBLUM

**Lajuneb jtsob mantal (Art. 10).** *Xjach'ibal te mayuk uts'inel.* Te ich'el ta muk' tsobwanejil son sleel túnel, ya me yich' pasel a ta mayuk uts'inel tsobwanej yun te antsetik ta sk'oplal ants-winik mayuk bajelil sok me ta pajalil stalelil sok te winiketik.

**Bulucheb jtsob mantal (Art. 11).** *Xjach'ibal yun te spasel sleel tunel.* Ja nix jichuk a te xjach'ibal xut'nax te smeलेलil, ma junuk nax, stukelnax, chajpalil, stuyel yak'elil sok yilel ta lek, yun me ta spasel te bitik at'elil yun te snail ts'ibjobal jteklum, ayix te ta cheb wakwinik jtsob mantal yun te smantal sleel túnel, ja me yich' ilela sok kanantayel te pajalil ta junax jich bit'il yach'il spaselil sleel túnel, jich nanixme ta spasel spasil te bitik ay le ta yutil sok spat te snail sleel túnel sok snaojinal ants-winik.

**Lajcheb jtsob mantal (Art. 12).** *Mach'atik sujbilik ta spasel ja in xjach'ibal k'op.* Te snail sleel tunel, te xajt'al xajt' tsowanejil, mach'atik sjapelsbaik, janix jichuk ta spasil te at'etetik yun lum ya na nix me spasi a te xjach'ibal k'op yun pajalil ta junax ants-winik jich nixuk te la yich'tileyix alel te ta jtsob mantaletik ta kajal, yun me jich yich' pasel a te xk'uxtayel tsobwanejibal sok sleel tuneletik, ja nix jich te yich'el ta muk' a te ich'el ta muk' yun te antsetik.

### XCHA'TENEL

#### Yun te Chajpojibalmantalil ta tsoblum sok te bitik ya spas te snail ts'ibjobal

**Oxlajuneb jtsob mantal (Art. 13).** *Xch'unel spasel te Chajpojibalmantalil ta tsoblum.* Te jtsob mantal wakeb wakwinik yun te mantal sleel túnel, jich me yaloj ja te Chajpojibalmantalil ta tsoblum, ja me yat'eline skanantayel te spasel te bitik albil le ta muk'ul mantaletik sok chapbil k'op yun swenta sleel tunel, janix jich te yilel ja me sk'oplal in to yun ya cholbeel te bitik spas te snail ts'ibjobal.

Ja me jich ts'in to, ja me pajalsok te bit'il yaloj te ta jtsob mantal jo'lajuneb scha'winik yajtalul jun yun te junax mantalil, te Chajpojibalmantalil ta tsoblum yun te snail



---

CHAJP MANTALIL TA TSOBLUM

ts'ibjobal sleel tunel jame ya yat'elin yun skanantayel te ya yich' pasel a te pajalil ta junax ants-winik, xcholbael te bitik spas te snail ts'ibjobal sok nix ta yat'el, ya me spas te sk'oplalul yun ants-winik.

**Xchanlajunebal jtsob mantal (Art. 14).** *Bitik yat'el te Chajpojibalmantalil ta tsoblum.* Te bit'il yaltileye te jtsob mantaletik waxuklajuneb scha'winik, wakeb wakwinik, jo'lajuneb wakwinik, yajtalul jun, xat'axat IX sok XXXIX, te snail sleel tunel ya me yil te bitik yas spas te xajt'al xajt' tsobwanejil sok te yantik tsobwanejil, ya yich' pasel jich bit'il ta mantaletik, sok te ch'unjibaletik te ya yak'ik ta spasel te bitik yat'el te tuneletik sleel tu'nel

**Jolajuneb jtsob mantal (Art. 15).** *Yun te abatil yun pajalil yun ants-winik sok mayuk bajelil.* Ja'me swenta yilel ta spasil te bitik k'opetik yun pajalil sok mayuk bajelil, te mantalteswanej ta tsobjlum yun te snail sleel tu'nel ja ya yak' te mantalteswanej mayuk lajibal yun pajalil te ants-winik sok mayuk bajelil te janix sok uk te yantikxan mantalteswanejeik, ja me ayik ta yak'tileybil ja nax oxeb mantalteswanej ants sok mantalteswanej winik sleel tu'nel, janix yich'el ta muk'te sk'oplal ants-winik.

**Waklajuneb jtsob mantal (Art. 16).** *Bitik yat'el te snail mantal ajwalil yun chajpojibal sleel tu'nel sok snaolbil wokolil yun swenta pajalil ta junax ants-winik.* Ja me yun te yak'beyela te snail mantal ajwalil yun chajpojibal sleel tu'nel sok snaolbil wokolil yun te bitik ay smeलेलil yun ja yak'el te lekil snopel ta yat'elul pajalil ta junax ants-winik sok smakelskomel te CPcM, janix te bit'il xan yat'elik yich'oj jich bit'il cholbil te ta jtsob mantal jun jukwinik yun te mantalil sleel tu'nel, ya me yich' ak'beyel a te jichto:

Jun. Ya me spas sok yak' chajbanbil at'el yun snaobal wokolil, pajalil ta junax ants-winik sok yich'el ta muk'te xk'uxtayel antsetik le ta baiy tsobwanejil, te ya yich' yak'el le ta tsobtejk'lum;



---

CHAJP MANTALIL TA TSOBLUM

Cheb. Ya me spas lok'el xcholel te k'op ayej yun te yich'el tsail, yilel sok skomel smakel te uts'inel ta tsobwanejil yun antsetik yun snopjibal ants-winik.

Oxeb. Ya me stij yak'el chapbil k'op ta yat'elul yun snaobil wokolil, pajalil ta junax ants-winik sok yich'elil ta muk' te antsetik le ta tsobwajnejil, snaibal ta junax sok yan yajwal, yak'el xcholelme te tsobwajnejil yun yak'el ta ilel te talelil tsobwajnejil-spas k'op ayej, te pajalnax sk'op yayej te antsetik sok winiketik, jich bit'il spasel xchajpal chajb awilal.

Chaneb. Ya me sp'ijubtes te at'eketik le ta snail ts'ibjobal sleel tunel yun me ta yich'el ilel, skoltayel sok skomel smakel te uts'inel ta tsobwajnejil ta stojol antsetik yun sk'oplal te ants-winik, jich bit'il yun pajalil smeilelil.

Jo'eb. Spisil te bitik yat'el ak'bilik te snail tsob'lej, ya me spas sok koltaybil yun te yantik xan kajpakap' snail ts'ibwanej sok nix te yantik ta jayeb pajal ay so'ke.

**Juklajuneb jtsob mantal (Art. 17).** *Bitik Yat'elik te nak'anwanejetik yu'un at'eltunel.*

Ja nix ta sjuybasoy te yat'elinel te cholbil le ta jtsob mantal lajuneb jukwinik yun mantalil sleel tunel, yun me swentail spukel sok yak'el, k'alal sk'alelal ta sleel tuneletik, te bitik ya yich'tilel paselyun yak'el sok skomel te VPcM, te nak'anwanejetik yu'un sleel at'el tunel ayik yip ta spasel yun:

Jun. Spasel te yantik chapbil at'el yun snop'tesel sleel tunel, snaojel wokolil, pajalil ta junax ants-winik sok kuxlejalil ta yich'el ta muk' a te antsetik le ta baiy tsobwanejil sok sleel tunel.

Cheb. Yilel sok slektesel sok snaojel ants-winik, te sk'anel chajp'anel sok yalel mulil ta ya yich'ik bael ta stojol te chajp'anwanejetik, ja nix te snub'oj sok a te mantaliletik te ayik le ta jtsob mantal baluneb, yun xch'unjibal te yalel



---

CHAJP MANTALIL TA TSOBLUM

mulil son sk'anel chajp'anel sok tsob mantal lajuneb scha'winik yajtalul cheb yun te mantalil ta junax.

**YOXEBAL SK'OPLALIL  
TE UTS'INEL TA TSOBWANEJIBAL TA STOJOL TE ANTSETIK**

**SBABIAL'TENEL  
Ya'yejul, stalelil, mach'a sok stojol muliletik**

**Waxuklajuneb jtsob mantal (Art. 18).** *Ya'yejul.* Te uts'inel ta tsobwanejibal ta stojol te antsetik yun swenta te ants-winik, ja me bitik pasbil o yijteyel, soknixme te maliwanej, jach'emtel ta ants-winik sok pasbil ta banti yochelal lum o xat'nax, te me ja jich snopoj biluk yak'el skomel, yijteyel o ma yich'ta wenta te spasel smeletil te ich'el ta muk' yun tsobwanej sok sleel tuneletik ta junax o bayal ta tul antsetik, te yochel ta smeletil te bi spasel sok a te yat'elej, bitik spasej, te mayuk makel yun te yat'ele, te k'alal ay bin ya snope, te slekil chajp'anelsba, ja nix jich te yochel sok spasel te bitik choltilebil, ja me sk'oplal te mach'atik sjaposbaik ta sleel tunel, bitik at'elil smakoj ta junax.

Jun. Ja me yich' na'ela te bitik pasbil o ma yich'el ta ilel ja me jach'em a ta bitik ay yun ants-winik, te k'alal ya yich' tik'el tul ants janax swenta te yun te antse; ya yich'uts'inbel ta mero amenxanix o te ay mero sbajelil ta stojol.

Cheb. Ya me stak' yak'el te yantik xan bitik a te uts'inel te najk'anbil le ta mantal yun yochelil sok ya me stak' yilelaj spasel yun yantik mach'atik xan, sp'ajbil le ta jtsob mantal tab yunix te ja in cholbil k'op.

**Balunlajuneb jtsob mantal (Art. 19).** *Talelil.* Yun ja sok a te bitik cholbil k'op le toj, ja me talelil a'te bitik yich'pasel uts'inel tsobwanejil ta stojol antsetik, te yaljibal te xi:





---

**CHAJP MANTALIL TA TSOBLUM**

Jun. Ma xch'unel te mantaliletik tulan sk'oplal yun lumetik ta spamal balumilal te snaojik ta spasel ta lek yich'el ta muk' yun antsetik ta tsobwanejibal.

Cheb. Skomtesel o smakel te ich'el ta muk' ta tsakel pajal sok muken yun te antsetik, o ma lek yak'el te yich'el ta muk' yun tsobel sbaik sok yak'el sbaik ta ba'ay yantik xan tsobjibaletik, sok bats'il tsob'lej, ta snaojel te ants-winik.

Oxeb. Snak'el cholbil k'op ay ta jun sok yijtael te tsobwanejibal yu'un te snak'anel mach'a sjapel sbaik o ta yantik xan bitik spas te yich'oline stsakel snopel le ta slekilteselbel te yat'elil sok bitik ya yich' pasel.

Cheneb. Yak'tileybeyel a te antsetik te mach'a sk'an o yich'oj yat'el yun tsael ta komon lotil cholbil k'op ta jun o ma' ts'akal, te ya smak te snak'anel jich bit'il sjapel sbaj o yak'el ilel ma lek spasel te bitik yat'ele.

Jo'eb. Yak'tileybeyel ma ts'akal cholbil k'op o ma jauk chajpalil yun te tuneletik spasel jun, steel tuneletik o chapwanejetik, te me ja sk'oplal yu'un te smakel skomel te yich'el ta muk' stsobwanejil yu'un te antsetike sok slekub yajtal te smeletil sbelal;

Wakeb. Yak'tileybeyel a te antsetik te mach'a yich'oj yat'el yun tsael ta komon lotil cholbil k'op ta jun, ma ts'akal o max tu'un, yun yak'el ch'ayel ta spasel te bitik yat'eline.

Jukeb. Spasel ma lek te sbael choljibal yun ja te skomel te ta yat'elul steel tunel yich' pasel a te bati junax pajalil.

Waxukeb. Spasel o yak'tileyel yantik xan tsobwanejibal o steel tunel yak' ta sboltesel o skojt'esel ta tul sjapelbail stuyobaj sok yan tik xan amen ta ants-winik te yak'tilayel spajalil ta k'axinteswanej, ma pajalil o ba'jelil ta swenta te



---

**CHAJP MANTALIL TA TSOBLUM**

antsetik, yun jich swenta skomel smakel te slok'ombaj ta sjuylejal o skomel te yich'beyel ta muk' tsobwanejil sok sleel tuneletik;

Baluneb. Yaltileyel, yantesel, sboltesel o yantik xan bitik ya spas yalel yun ta xk'exlaltel te antsetike yun ta spasel te yat'elike, sok nix ta yan tik xan chajp k'op yun te ants-winik, yun yot'an yak'bey swokol, xk'exlaltel, o skombeyel te yich'el ta muk'.

Lajuneb. Spuktileyel slok'ombaj, yalel k'op o yantik xan ayej te janax yun stukel o mastak' yich'albeyel yu'un te antse, o ta spasel ta baiy yantik xan o ch'ajan tak'in, yun sk'anel pasbeyel yak'el k'exlal, spuktileyel, yutel o slabanel yun te snopibalyun sok bitik sna' yun te tsobwanelile, sok ta ba yun yantik xan betik snoptilayel yu'un ants-winik.

Bulucheb. Xiwtesel o bitik yalbeyel ta tulnax o bayal antsetik o ta ba'ay sme'tat o sotak at'el yun sk'anel ta yakuk yijtey te biti yak'oj sba ta tsael yun tunel o te bekaj yat'eline.

Lajcheb. Skomel ta bitik xan stak', te antsetik te tsabilixe o ak'bilixe ta bitik at'elil ta yun pajal stsakel te yat'ele, sk'oel le ta baiy tsoblej o tsobwanejil muk' sk'oplal o yan tik xan bitik spasel ta yun xchapel sok snopel te yat'ele, skombeyel o yijtile jelel te yich'el ta muk' yu'un sk'op yayej.

Oxlajuneb. Smakel te yich'el ta muk' yun stsobwanejil te antsetike ta swenta yun stalel kuxlejalik o chajpojibalik yunik, te yun skomel sok yixtalayel ich'el ta muk'.

Chanlajuneb. K'axel yak'el, ta swenta yantik nopbil yun ants-winik, ta spasel yantik at'el ta ma ja'uk ak'bil yu'une le ta alwanejil tsobwanej, bek at'el yich'oj;



---

### CHAJP MANTALIL TA TSOBLUM

Jo'lajuneb. Sb'ajel a te ants yun spasel te yich'el ta muk' tsobwanejil ja nax yun te me ay sba'al-yik'ojmal, sbejk'ajelix, sok xan skomtileyel yak'elsbaj ta yat'ele yun janax ta le sk'an k'a'ale yun yilel alal o yantik xan sk'anel k'aal te ayik le ta mantalil.

Waklajuneb. Spasel uts'inel ta yok sk'ab, uts'inel ta sbak'tal, yalelil, snopjibal, tak'in o bitik x'en ta stojol tul ants yun xk'uxtayel yich'el ta muk' te stsobwanejil.

Juklajuneb. Skomel o ma yak'el ta banax k'alal te bitik ya xtu'un sok a te yich'el yat'el te antse, jich nix te stojolile, sok yantik xan bek ya stak' spas yun te yat'elej, yun me ta pajalil.

Waxuklajuneb. Sujel tul ants, ta yak'el yip, stanel o ch'ajtal ayej, ta spasel junetik o yak'bey yip snopel ta majauk xch'unej yot'an o ma' lek ta stojol te mantaliletike.

Balunlajuneb. Sboltesel o ma yak'el te yochelil ta slekil chajpanel te antsetike yun skanantabeyel te yich'elik ta muk'yun tsobwanej.

Jtab. Smakel o mayak'el ta banax k'alal ta stu'ntesel te bitik yat'eline sok ta yich'oj yat'el yun tsobwanej te antse, komtileyel ta spasel te yat'ele ta junax pajalil.

Jun xcha'winik. Yak'el ta banax k'alal toj mulul te ma yuk swenta o k'ax tuyemnax, smakel o skomel te yak'el yich'el ta muk' tsobwanejil ta junax pajal, o;

Cheb xcha'winik. Yan tik xan bit'il pajalsok ta yuts'inel o sok nix sboltesel te lekilalil yun, ta stojolnax o skoltayel yak'el te antsetik ta tsakel jun yat'el ta chikan baiy, snopil, slok'el, te ya yixlanbey yich'el ta muk' tsobwanejibal sleel tunel.



---

**CHAJP MANTALIL TA TSOBLUM**

Oxeb xcha'winik. Ja nix jich te bitik ya stak' pasel te bit'il yaloj te ta jtsob mantal jbajk' cheb yoxwinik. Bis, yun ta junax mantalil.

**Tab jtsob mantal (Art. 20).** *Mach'atik.* Ja me yich' kuyel jich bit'il mach'atik spas yu'un VPcM, te ja in to:

Jun. Bijil kananwanej ta tsoblum.

Cheb. Te kajatik muk'yat'el.

Oxeb. Sjuysbaik ta at'el.

Chaneb. Machatik ya stsob ta xajt'al xajt' tsowanejil

Jo'eb. Mach'atik sjunej sok skoltayel ta be'el.

Wakeb. Ants'sjapelsbaj, winik'sjapelsbaj, te yich'ojuk ak'el yun te xajt'al xajt' tsowanejil wolwanej yunik nix.

Jukeb. Mach'atik ya spuk xch'amel k'op sok te jay tu yajwal.

Waxukeb. Ta tuj nax o yun tsobol ta tul antswinik ta yantik xan.

Baluneb. O yantik xan a te jayeb albilix le ta jtsob mantal jo'lajuneb juklajunwinik mantal le ta mantalil ta junax.

**Jun scha'winik jtsob mantal (Art. 21).** *Ma sk'anel spasel uts'inwanej.* Ja nix me sujbilik a te mach'a ya sk'an yak'sbaj, sjapelsba ants sok sjapelsba winik, te me le nix ta sbelal xajt'al xajt' tsowanejil o stukelanax, ja nix jich te mach'atik xan bit'il albil le ta yajk'lal, ma yak'elsbaj ta spasel bek ma lek yun ta stojol te antsetike yun swenta ants-winik o yalel k'opetik te ya xk'exlaytes, sboltesbel k'oplal o sbajel ta yantik xan mach'atik ya sk'an yak'sbaj ta sleel o tsaelil yun tuneletik, yun ta xajt'al xajt' tsowanejil, mach'atik, snail tsoblej ta junax sok yantik.



---

CHAJP MANTALIL TA TSOBLUM

**Cheb scha'winik jtsob mantal (Art. 22).** *Bitik sk'an yun tsa'elil.* Ja nix jichuk te bitik yich' k'anel te cholbilix le ta mantalil yun tso blum, sok nix te ta jtsob mantal bulucheb yajtalul jun sok cheb yun te mantalil sleel tunel, soknixuk te bit'il pasbil le ta jtsob mantal lajuneb yajtalul jun, kaj g) yun ta mantalil ta junax, ja me sk'anel yun tsa elil ta yich'el at'el tunel ta komon ta stael k'alal sk'alelal sleel tunel 2020-2021, yun me mayuk bi stao yun smul ta uts'inwanej tso bwanejibal.

**Oxeb scha'winik jtsob mantal (Art. 23).** *Yun te xk'axintesel mantalil.* Ja nix jich te bit'il ts'ibabil le ta jtsob mantal waklajuneb juklajunwinik mantalil yun sleel tunel, ja jich kuybil ta sk'axentesel mantalil yun sleel tunel, te bitik spasel o yijteyel ay sok te ma spasel te bitik xk'axelal ak'bilike yu'un tsabajtel, yilel sok skomel-smakel te uts'inel tso bwanejibal ta stojol te antsetike swenta ants-winik, janix te, te bi yilel te mulile, ya me stak' stoj smul spojbejel xujt'uk ta k'alal oilil lajuneb yoxwinik yun jo'winik yajtalul yun te chapjunetik yun yak'el stojwanej, te ja yu'un te xajt'al xajt' tso bwanejil te bin ora sk'alelal bit'il yaloj ja in slajibal k'op, sok nix ek te bit'il yaloj yu'un te jtsob mantal jukek swaxuklajunwinik, yajtalul cheb, xat'abil oxeb yu'un te mantalil sleel tunel.

Ja nix jich a te sk'axintes mantalil te cholbilik le ta jtsob mantal waklajuneb sjuklajunwinik sok juklajuneb sjuklajunwinik yu'un te smantalil sleel tunel, ya me yich' chukel te bitik talelalil mero ma lek sok sk'axintesel a te mantalil yu'un tso blum, te mantalil yu'un sleel tunel sok te bitik to choltibilix ay, ja nax me mero a te sujelalik ta spasel yun tsajel, yilel sok skomel-smakel te uts'inel ta tso bwanejibal ta swenta te antsetike swenta ants-winik.

**Chaneb scha'winik jtsob mantal (Art. 24).** *Yu'un te stojel mulil.* Ta schap'anel te talelil yu'un bitik ma lek yun VPcM, ya me stak' yich' ak'bejel, janix jichuk te bit'il ts'ibabil le ta jtsob mantal juklajuneb sjuklajunwinik yu'un te smantalil sleel tunel, te ja me a toj:



---

## CHAJP MANTALIL TA TSOBLUM

### **xajt'al xajt' tsobwanejil**

Jun. Te skojt'esel yajtalul ta k'alal olil lajuneb yoxwinik yun jo'winik yajtalul yun te chapjunetik yun yak'el stojwanej te ja yu'une, yun te sk'alelal te bit'il yaloj te ja xchapil-slajibal k'op.

### **xajt'al xajt' tsobwanejil sok tsobolil tsobwanejil**

Cheb. Sok te mask'asesel te snak'anbil jun jich bit'il xajt'al xajt' tsobwanejil.

### **Jtul winik ak'bil sjapelsbaj, matoj sjapelsbaj sok xajt'al xajt' tsobwanejil**

Oxeb. Te k'alal ya yich' ta'el VPcM, ja ta stu'ntesel te at'elil xcholel sok iljibal, ya me yich' k'anbeyel a te INE te yak'tel ta mero ma'xalaj yun skomel te spukelej sok ya me yich'ak'beyel sk'alelal te ch'ajan tak'in cholwanej, sok nix yich'ej te at'elil yun yajwal lum mach'a sk'axintes mantal, ya na nix me sk'an wokolaj ta spisil antswinik, yu'un jich me ya slamtes te bek a'men la spas.

## **XCHA'TENEL**

**Yu'un te sbelal meltsanel yak'el stoj muliletik sok yan tik xan sjunil mantaliletik**

**Jo'eb scha'winik jtsob mantal (Art. 25).** *Bitik sbelal meltsanel yak'el stoj muliletik.*

Sok nix'uk te jo'lajuneb sjuklajunwinik jtsob mantal yun te mantalil sleel tunel, te sbelal meltsanel yak'el stoj mulil yich'el k'a'al, ya me yich' pasel te k'alal ya yich' alel yantik xan bek a'men te yu'un yich'oj bek ma lek ta pajsel bit'il albil le ta smantalil sleel tunel, sok te slajunebal'tenel yu'un xch'unjibal te chol mulil sok chajpel yun snail ts'ibojibal.

Ja ta sk'oplal yu'un te jtsob mantal jbak'slajuneb schanwinik le ta junax pajal mantal; jun schanlajunwinik le ta smantalil sleel tunel sok waxuklajuneb schanwinik yun te



---

### CHAJP MANTALIL TA TSOBLUM

xch'unjibal te chol mulil sok chajpel yun snail ts'ibjibal sleel tunel, te smeltsanel mero lek kanan mulil ya xjach' te k'alal yich'alel mulil, ta bay sk'alelal sleel tunel ta spaselbel te bitik stalel to:

- I. Yuts'inel te bit'il cholbil le ta jtsob mantal chanlajuneb sjukwinik xwaxukebal xat' yu'un te muk'ul mantalil sok oxlajuneb schanwinik yu'un te mantalil ta tsoblum.
- II. Sjeltileyel ta ma lek te bitik chapbil yun swenta sbe'el spukel tsobwanejibal sok sleel tunel, sok
- III. Nix spasel bitik mata yorailuk be'el yak'el ba ta ilel.
- IV. Spaselnix'uk bitik ma'lek ta stojol te antsetik.

Janix, sok a te bit'il yaloj yu'un te jtsob mantal lajcheb yo'winik yun xch'unjibal te chol mulil sok chajpel, ya me stak' yak'bel ta ch'ajan tak'in; pero jich me, te k'alal ya yalik te ay yich'pasel te yun yak'el VPcM, te jtsob mantaliletik lajcheb yajtalul jo'eb, oxlajuneb yaktalul chaneb', jo'lajuneb yajtalul oxeb sok lajuneb yo'winik yajtalul oxeb, te ja in cholbittel mantalil yak'oj me xan bayal ta sjamel te yochelin sok spajel ta lek, yun ta stael yak'el a te mach'atik yich'uts'inel skoltayelik ta banax k'alal yun yak'el snael mulil o chajpel ta swenta bitik pasbil to.

**Wakeb scha'winik jtsob mantal (Art. 26).** *Yak'el smakelil sok slekubtesel.* Te Yak'el smakelil sok te slekubtesel te ya stak' yak'ilel yun swenta te yak'el te chol muliletik swenta VPvM, le me ay ak'bil le ta jtsob mantal jukeb scha'winik yajtalul oxeb sok jo'eb yo'winik yajtalul jo'eb yun xch'unjibal te chol mulil sok chajpel te snail ts'ibjibal, te ja me jich ay ta:

#### **Yak'el smakelil sok slekubtesel**

- I. Spasel snopel te me ay wokolil sok jun xchapibal yun slekilalik;



---

CHAJP MANTALIL TA TSOBLUM

II. Stikunel lok'el te mach'a ay bi a'men spas sok te mach'a yich' uts'inel, ya me yich' alel te'bis swentaile.

III. Te me ay jich spasojax jun buelta te bek ma lek, skomel te bitik pastileyik ak'bil te mach'a ay smul; sok

IV. Yak'el be'el skomel te bitik yich'oj yat'el, te mach'a ay smulej.

Janix jich te bitik stojol mulil albilixé, te at'el tunel yun sleel tunel, ya me stak' yak'xan yantik bituk skoltayel te antsetike sok jich nix, ya me sjunba'el na nix a ta spasil ora yak'beyel skoltayel ta me jich ya sk'an te mach'a la yich'uts'inele.

Yun ta spasel sok yak'el spasil snopjibal yun bek amen sok schapel lekilal, te snail sleel tunel ya me yak'bey a te mach'atik ay yat'elik yu'un spasel-xchapel te sbelal chap muliletik, ta snoptesel, sok yak'beyel spasil bitik ya sk'an snop.

**Yun'un spasel.**

I. Yich'el tojel te mach'a la yich'uts'inel.

II. Sjelteyel ta ora nax te bitik yat'el te la yich' sujel ta yijteyel yun spasel bek ma lek.

III. Sk'anel wokolil, sok

IV. Yak'beyel smakel yun ma spas xan yan vuelta.

Ja in stojel bel ma lek toj ya me stak' ak'beyel te biyilel te xk'axintesel mantal.

**Jukeb scha'winik jtsob mantal (Art. 27).** *Xcholel mulil sok at'el tunel sok yan tik xan at'eletik.* Te k'alal ya xbaj yich' sk'anel chajpanel yun swenta VPcM, ta stojol tun at'el tunel, ja nix me sok te bit'il yaloj te jtsob mantal baluneb yo'winik, yajtalul cheb yu'un te xch'unjibal te chol mulil sok chajpel, te spas jun ants tu'em yat'el, ya





---

## CHAJP MANTALIL TA TSOBLUM

me yak'bey yil sok mero sok sjunil ta k'alal ya yich' sk'anel chajpanel, te at'el tunel te yat'elinej yun smakel-yilel pas junetik, yu'un jich me ya yak'ik te sbelal k'opetik, ta janix jich swenta te ta junax pajal mantalil yu'un yat'elinej yun smakel-yilel pas junetik.

### YOXEBAL TENEL

**Yu'un snak'anel tsoblum te sk'oplal te uts'inel tsobwanej ta stojol antsetik.**

**Waxukeb scha'winik jtsob mantal (Art. 28).** *Sjunil mantalil ta junax.* Janix jich ta swenta a'te bit'il pasbil yu'un te yawil tsojbil tsob muk'ul chapijibal ta xchapel te sjunal SUP-REC.19/2020, te sjunil nak'anel tsob lum yu'un xk'axintesel mantalil ja me ay ta sjunal yun te mach'atik xk'axinemantalej, ja me sk'oplal jich albilaj yu'un yatijibal bayal stu'ul, yu'un smuk'tesel te tsobwanejibal yu'un smakel-skemel ta stojol te VPcM.

Te najk'anbil ta jun tsoblum, ja me ya xjil pajal sok a te bitik stu'ul yu'un tu sjunil mantaliletik te ayik le ta xcholjibal k'op to te ya yak' te INE swenta te najk'anejibal ta spamal k'inal.

Te me mato yich' pasel a te najk'anejibal ta spamal k'inal, ya me yich' najk'anelik spisilik mach'atik xk'axintes mantal te ayik ta stojol smulik yu'un VPcM.

Te yochel ta najk'anejibal ta spamal k'inal, yu'un me swenta spuktilijibal, yu'un me ma ja'uk swenta stntesel, ja me xch'un te bitik chapbilixtel yu'un te tuneletk sleel tunel, schapel mulil o pas junetik te me ay la staik pasbil yun VPcM.

**Baluneb scha'winik jtsob mantal (Art. 29).** *Snak'ibal stojol muliletik yu'un swenta bitik VPcM.* Ta sk'alelal te sleel tunel te snail aleel tunel ya yak'jach'el te snajk'ijibal tsob lum yu'un uts'inel tsobwanejil swenta antsetik, ya me yich'ochesel ta snajk'ibal jun ya me yich' ak'beyelbe'el te tuneletik sleel tunel, pas junetik o chapmuliletik te ayik ta yilel te chap k'opetik, al mulil yu'un VPcM.



**SNAIL TS'IBJIBAL SLEEL TUNEL SOK YOCHELINEL A'TEL  
YAWAJLUM TA TABASKO**



TE A'YOCHINEL AT'EL  
JA'ME KAT'ELTIK

---

**CHAJP MANTALIL TA TSOBLUM**

Ja me yu'un, te snail sleel tunel ay me ta yalbeyel te tuneletik ta ya stak'yilik sk'anel chapel muliletik yu'un kuybil VPcM, yu'un me ayik ta xchapel yak'el k'opetik, yu'un sbelal k'opetik te ayikix stao sbelal k'op, ak'bilik chajpanbil yun muliletik ta VPcM, sok nix me spajo sok te bit'il chapbil jun te ak'bilix te chajpachab tunele, yu'un me ya yak'beysok le ta najk'anbil tsoblum yu'un uts'inel tsobwanejil ta stojol te antsetik sok nix spasel te bit'il ak'bil le ta chapbil slajib k'op ak'biltel yu'un te yawil tsojbol tsob muk'ul chapijibal le ta chapbil SUP-REC-91/2020.

Te bit'il ya yich'cholel te bek cholbilixto, ya me stak' ak'el be'el ta jun o ta ch'ajan tak'in le ta snail ch'ajan tak'in: [contencioso@iepct.mx](mailto:contencioso@iepct.mx).

Sok me ta sbelal nix te ta jtsob mantal bulucheb yo'winik xch'unjibal te chol mulil sok xchajpel yu'un te snail ts'ibjobal, jich me te najk'anbil junej ayik me ta ilel ta yun spisil lum le ta bay yiljibal ch'ajan tak'in yu'un te snail ts'ibjobal, sok me ay yip ta wakeb jawil.

Te muk'ul chajpanwanej tsoblum, ya me yil sok jich nix me ya yak'bel le ta naj te aynanix yat'el yun spasel bitik xtu'un yu'un xcholel ta mero lek yu'un me, ta spisil te tuneletik, ya me yach'tes te snajk'anejibal VPcM, jich bit'il xchapoj te Yawil tsojbil tsob muk'ul chapijibal le ta chapbil slajib k'op SUP-REC-91/2020.

**XCHANEBAL SK'OPLAL  
YU'UN TE PAJALIL SOK YANTIK TA JUNAX**

**SBABIAL TENEL  
Yayejul, spasel sok bitik slektesel.**

**Lajuneb scha'winik jtsob mantal (Art. 30).** *Spajalil ta junax bit'il muk'ul mantalil.*  
Te xjach'ibal pajalil le me ay ts'ibabil ta muk'ul mantalil sok ja me xjach'ibal te spasel sleel tunel te ya stu'ntesik nixu'uk te tsobwanejibal tsobil sok te sleel tuneletik, xjach'tesel te sujelalil yun yich'el ta muk' yu'un ta yilel te xjach'ibal snael yich'pasel.



---

CHAJP MANTALIL TA TSOBLUM

**Bulecheb scha'winik jtsob mantal (Art. 31).** *Yayejul.* Te bit'il cholbil le ta yoxebal jtsob mantal yajtalul jun xat' d Bis) le ta muk'ul mantalil, te spajal k'uxtayel ya me yich' na'el jich bit'il pajalil tsobwanejibal ta antsetik sok winiketik, yun yak'el olil antsetik sok olil winiketik le ta sjapelsbaik ta at'elinej yu'un tsael tunel komon sok yak'el at'el yu'un ak'beyel.

Te k'alal tsak at'el yu'un tsael te snaojibal yun ak'beyel ya ja'me yu'unik te kaj ja kaj xat ma pajal yajtalul, ja me ya yich'pasel sok te olil yun jo'winik sok xan tul ak'bil ta stojol te antsetik, sok stao yip sok te bitik cholbil k'opetik yun spajalil ak'bilik yu'un ja in snail ts'ibal, yich'oj ak'el te baluneb scha'winik swakebal uh' te jabil in to sok te chapbil k'op CE/2020/022.<sup>1</sup>

**Lajcheb scha'winik jtsob mantal (Art. 32).** *Yilel te spajel junax le ta bay snajk'anejibal.* Te snak'anel sjapelsba, xajt'al xajt' tsowanejil sok mach'a stukul japosbaj te ya sk'anik at'elil ta tsael, ya me yilik be'el te bit'il le ay ta chapbil k'op CE/2020/022 yun swenta te sbelal cholpil k'op yu'un yich'el ta muk' te xjach'ibal mantalil yu'un spajalil, junax sok mayuk bajel ta k'alal yak'elbail ta tsael ta stejk'anel lum ta ch'in lum, rejoretik sok yantik xan tuneletik k'alal steel tuneletik.

**Oxlajuneb scha'winik jtsob mantal (Art. 33).** *Yilel te spajelil te ta stejk'anel tsobwanejil.* Sok nix te bit'il ay ta snopjibal k'opetik ta sjunil juklajuneb scha'winik yun te chapbil slajibal k'op SUP-JDC-1862/2019, te snail steel tunel, ya me yil ta lek te spasel te sjach'ibal k'op yu'un spajelal ta spisil, jich nix ta k'alal yak'elil te y spasik te xajt'al xajt' tsowanejil le ta stejk'anel tsobwanejibal yun sok te so'tak te chajpanwanejetik steel tuneletik.

Te me ja jich ya me yal ta ju'jun te yak'el pas'bilix, pero te me ya yich'stsael te ay jun bayal yajtalul te wolwanej winiketik, ya me yalbey sok ta ts'ibabil jun ta ya spas

---

<sup>1</sup> 11



**SNAIL TS'IBJIBAL SLEEL TUNEL SOK YOCHELINEL A'TEL  
YAWAJLUM TA TABASKO**



TE A'YOCHINEL AT'EL  
JA'ME KAT'ELTIK

---

**CHAJP MANTALIL TA TSOBLUM**

te yak´el pajalil sok ya spaj ta junax te swolwanejike, yich´el ta muk´te chapbil slajibal k´op SUP-REC-1183/2017 sok te ts´ibabil jun XII/2018, tul winik ma stak´ sjeltey tul ants, pero ya me stak´stukel te tul ants sjeltey tul winik.

Te me ay jich yijteyel, te chajpanwanej tsoblum ya me yabey stoj ta yolil antswinik te macha yun xajt´al xajt´ tsowanejil, yu´un me te xk´axintesel mantal xjach´ibal spajelil sok ich´el ta muk´ xajt´al xajt´ tsobwanejil yu´un antsetik, y ja´in xajt´al xajt´ tsowanejil ya me xjil mayuk swolwanejibal ja to ta k´alal ya slekubtes te bitik sk´anel, ja´me yak´el te mach´atik antsetike ta mero spasel yu´un te xjach´ibal spajelil.



---

## CHAJP MANTALIL TA TSOBLUM

### JTSOB MANTAL AJK'NAX SK'ALELAL

**Sbabil.** Te ja in xcholjibal sbelal k'op ya me jich'ch'unel ta k'alal yich'k'asesel yu'un te tak'ujwanej ta tsoblum.

**Xchebal.** Ya me yich' albeyel-cholbeyel te ja in xcholjibal sbelal k'op te at'el tuneletik albilik le ta baluneb scha'winik jtsob mantal.

**Yoxebal.** Te me ay jich a te muk'ul mantaliletike o yan tik xan ch'unjibaletik yu'un tsob lum o xch'unjibal yu'un sleel tuneletik yun INE, ta ya xchajpik xch'unel mantal te ayik ta mero slekikal bituk yun spasel te xjach'ibal spajalil yun antswinik, sok te mayuk uts'inel le ta ich'el ta muk' tsobwanejibal yu'un te antsetike, te ja in mantaliletik aynanix me'a ta sok a te ja in cholbil spasel k'opetik to.

**Xchanebal.** Te ja in xcholjibal sbelal k'op ya me stak' yich'tiley tijel o ak'beyel sjuy yu'un te chapmantaletike, yu'un me ya yak' spajel yu'un stojobtesel te muk'mantal yu'un tsob lum, te mantalil yu'un sleel tunel, o chapbil k'opetik ta sch'unel junax te ya yak'te INE, te ayik ta pajal sok te bitik altilebil le ta jun to; ja'into, sok nix'uk ta stojol te yich'el mantalil te ja ya spas sok yak' ta stojol te chapk'opetik ta tsoblum, te pastil at'el jun te yu'un stijel te albil k'opej.



SNAIL TS'IBJIBAL SLEEL TUNEL SOK YOCHELINEL A'TEL  
YAWAJLUM TA TABASKO



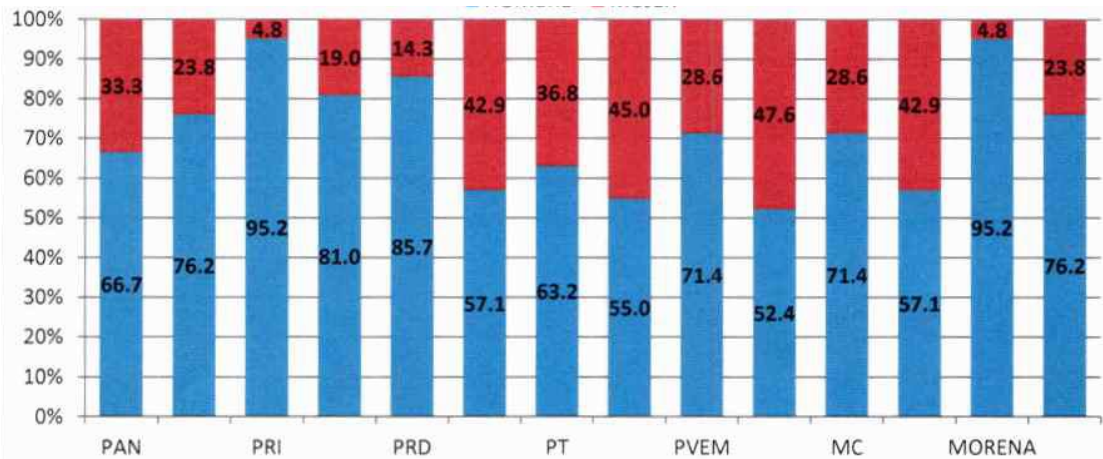
TE A'YOCHINEL AT'EL  
JA'ME KAT'ELTIK

CHAJP MANTALIL TA TSOBLUM

XCHEBAL SJUNJIBAL

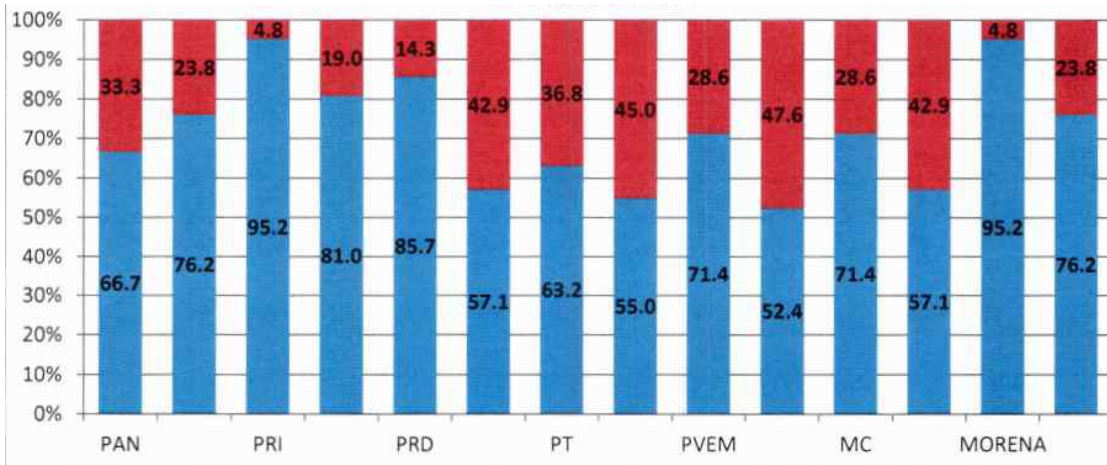
Yajtalul te alwanejetik yun xajt'al xajt' tswanejil le ta najk'anwanejetik yu'un at'eltunel.

■ WINIKETIK ■ ANTSETIK



Yajtalul te alwanejetik yun xajt'al xajt' tswanejil le ta najk'anwanejetik yu'un tejk'lum at'eltunel.

■ WINIKETIK ■ ANTSETIK





**SNAIL TS'IBJIBAL SLEEL TUNEL SOK YOCHELINEL A'TEL  
YAWAJLUM TA TABASKO**



TE A'YOCHINEL AT'EL  
JA'ME KAT'ELTIK

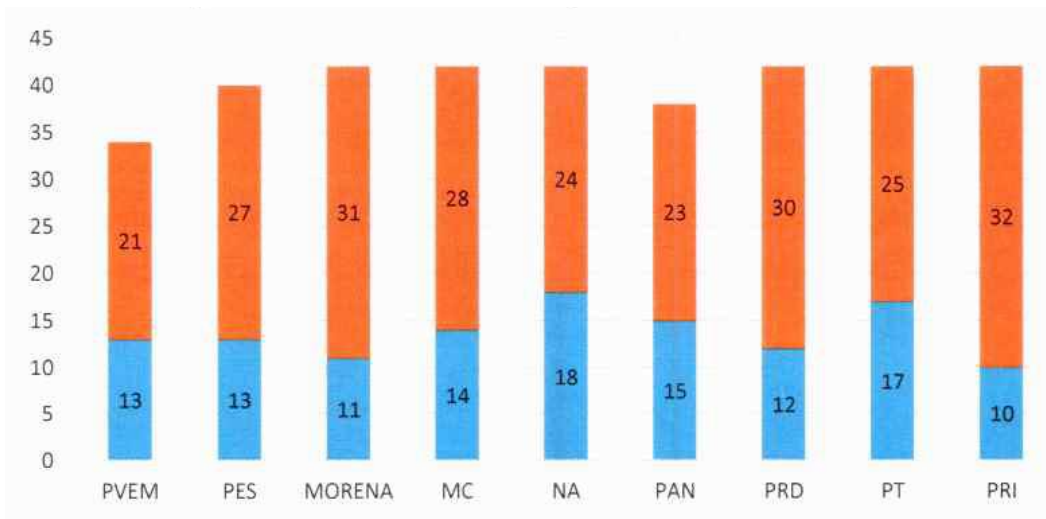
**CHAJP MANTALIL TA TSOBLUM**

**Alwanejetik le ta najk'anwanejetik tejk'um at'eltunel 2017-2018**



■ ANTSETIK ■ WINIKETIK

**Najk'anwanejetik yu'un at'eltunel 2017-2018**



■ ANTSETIK ■ WINIKETIK